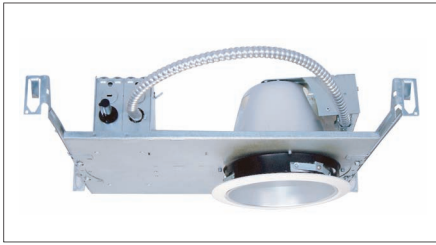


# DL-6235A

## 6" NON-IC Horizontal Flat Frame-in kit For Incandescent Lamps

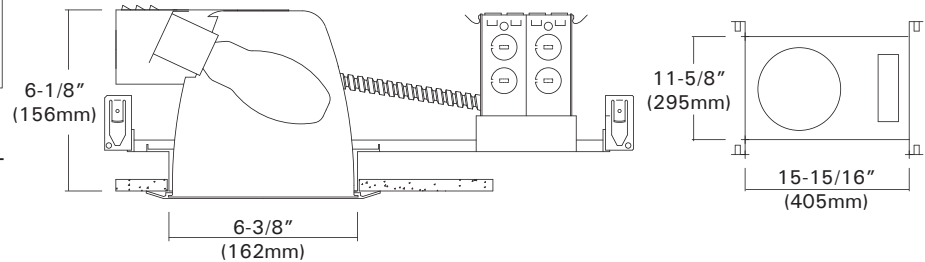
Catalog #		Type
Project		Date
Prepared by		

### INCANDESCENT



#### DESCRIPTION

6" aperture flat frame-in kits for horizontal A Type incandescent lamps. These are designed for use in non-insulated ceiling for general lights on floor and task lighting with deep concealed lamps.



#### DESIGN FEATURES

Ceiling Cut-out : 6-1/2"  
Lamp, Max, Watt. / Ballast : 150W / A21 or 100W / A19

##### • Housing Kit

- C-UL listed, NON-IC, thermally protected housing for horizontal A type incandescent lamps.
- 1-5/8" deep collar may use for various thickness of ceiling.

##### • Junction Box

- Listed for through branch circuit wiring. (Max. 8 No 12 AWG 90°C branch circuit conductors. (4 in, 4 out)
- (5) 1/2" knockouts with true pry-out slots and (4) knockouts with Romex cable clamp.
- Ground wire provided on J-box.

##### • Reflector

- Anodized clear, haze, gold, champagne, pewter color finished full reflectors. And anodized reflectors with black or white milled groove baffle collar.

##### • Trim Ring

- White metal ring plated chrome, satin nickel, natural steel color ring.

##### • Socket

- Medium base porcelain socket with nickel plated screw shell.

##### • Bar Hangers

- 24" Bar Hangers provide stability and support on joists and T-Bar Grid ceilings.
- Housing can be positioned at any point within 24" joist span.
- Score lines allow "toolless" shortening for 12" joists. Bar hangers may be repositioned 90 degrees.
- Integral T-bar clips snaps onto T-bars and no additional clips are required.

##### • Thermal Protector

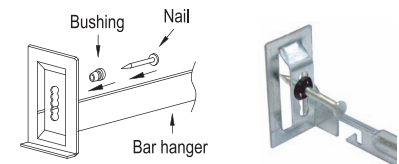
- Self resetting thermal detector on J-box deactivates fixture if overheating occurs due to improper lamping or mis-applied insulation.
- Install varied detectors according to input voltages.

##### \* Listing

- UL, c-UL listed for damp location.
- UL, c-UL listed for feed through.

##### • Just-A-Nail

Adjustable nail hanger bar for easy alignment.



##### JUST-A-NAIL

- Pre-installed nail bars with vertical slots are used to evenly align the bars horizontally after nailing halfway into wood joists.

##### \* Optional" Mounting Channel Bracket"

- Commercial mounting kit provided up to 5" vertical adjustment, which accommodates 1/2" EMT conduit, optional HB-24 or HBC-24 bar hanger or lathing channels for T-bar grid or concealed spline ceiling.

# Trims

## 6" Horizontal Incandescent Trims For

DL-6235A, DL-1635A, DL-1635RA

Catalog #		Type
Project		Date
Prepared by		

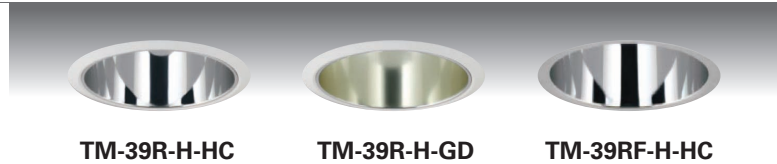
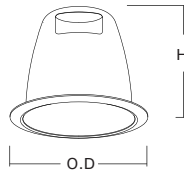
### INCANDESCENT

#### TM-39R-H TM-39RF-H

**Specular Open Reflector**  
150W A21 or 100W A19

White Metal Trim Ring  
O.D : 7-7/8"  
Height : 6-1/4"

\*Symbol (RF) is for Self-flange



TM-39R-H-HC

TM-39R-H-GD

TM-39RF-H-HC

#### TM-30B-H

**Baffle w/ Reflector**  
150W A21 or 100W A19

White Metal Trim Ring  
O.D : 7-7/8"  
Height : 6-1/4"



TM-30B-H-WH

TM-30B-H-BK

#### TM-31-H

**Wall Wash w/ Kick-off Plate**  
150W A21 or 100W A19

White Metal Trim Ring  
O.D : 7-7/8"  
Height : 6-1/4"



TM-31-H-HC

#### TM-36B-H

**Baffle w/ Fresnel Lens**  
150W A21 or 100W A19

White Metal Trim Ring  
O.D : 7-7/8"  
Height : 6-1/4"



TM-36B-H-WH

TM-36B-H-BK

#### TM-36R-H

**Reflector w/ Fresnel Lens**  
150W A21 or 100W A19

White Metal Trim Ring  
O.D : 7-7/8"  
Height : 6-1/4"



TM-36R-H-CL

#### TM-38-H

**Reflector w/ Frosted Drop Lens**  
150W A21 or 100W A19

White Metal Trim Ring  
O.D : 7-7/8"  
Height : 6-1/4"



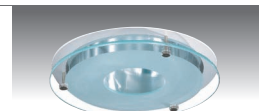
TM-38-H-HC

TM-38-H-WH

#### TM-38S-H

**Reflector w/ Frosted 3.5" Center Hole Lens**  
150W A21 or 100W A19

White Metal Trim Ring  
O.D : 7-7/8"  
Height : 6-1/4"

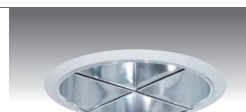


TM-38S-H-HC

#### TM-359-H

**Reflector w/ Cross Louver Blade**  
150W A21 or 100W A19

White Metal Trim Ring  
O.D : 7-7/8"  
Height : 6-1/4"



TM-359-H-HC

#### TM-354-H

**Reflector w/ Wall Wash Plate**  
150W A21 or 100W A19

White Plastic Trim Ring  
O.D : 7-7/8"  
Height : 6-1/4"



TM-354-H-HC

◆ White metal ring standard.

◆ All trims are damp location, Lens trims are wet location listed.

### ORDERING INFORMATION

Choose the catalog / finish codes that best suit your needs and enter it on the appropriate line.

TRIM MODEL	REFLECTOR	LENS	BAFFLE	METAL RING
	CL :Clear	FR :Fresnel	WH :White	WH :White
	WH :White	AS :All Sanded	BK :Black	BK :Black
	GD :Gold	CL :Clear	SN :Satin Nickel	SN :Satin Nickel
	MA :Matte Platinum	CV :Convex Prismatic	AN :Antique Nickel	AN :Antique Nickel
	CP :Champagne	AL :Albalite	AC :Antique Copper	AC :Antique Copper
	PR :Pewter		MO :Mocha	MO :Mocha
	HC :Haze Clear		CA :Cappuccino	CA :Cappuccino
			CH :Chrome	CH :Chrome
			UN :Natural Steel	UN :Natural Steel
			PB :Polished Brass	PB :Polished Brass

Examples:

TM-39R-H-HC-WH = Haze Clear Reflector

TM-30B-H-BK-WH = Black Baffle w/ Clear Reflector